

Countin' Them Long White Lines

Part 2 of "A Piece of the Road Suite"

composed & arranged by John LaBarbera

1ST Eb ALTO SAX

ROCK

2ND TIME ONLY

A A⁹ A⁷ 3 TIMES

B

C

D (C⁷sus) 8 E (E⁷sus) 8 F (C⁷sus) 4

(TENDR SOLO)

G

H BEGIN GRADUAL FADE TO END

1. mf mp

2. STAGGER BREATHS RIT. pp fpp

Countin' Them Long White Lines

Part 2 of "A Piece of the Road Suite"

composed & arranged by John LaBarbera

2ND ED ALTO SAX

ROCK

2ND TIME ONLY

Musical score for 2nd Ed Alto Sax, Part 2 of "A Piece of the Road Suite". The score is in 4/4 time and includes various musical notations such as notes, rests, and dynamics.

Key features of the score include:

- Chord Progressions:** A (A9 A17) 3 TIMES, D (C7sus) 8, E (E7sus) 8, F (C7sus) 4, G (4), H.
- Section Markers:** A, B, C, D, E, F, G, H.
- Performance Instructions:** "TENOR SOLO" under section D, "BEGIN GRADUAL FADE TO END" under section H, "STAGGER BREATHS" and "RIT." under the final section.
- Dynamics:** mf, f, mf-p, p, pp, fff.
- Rehearsal Marks:** 1. 2., 3., 1., 2.

Countin' Them Long White Lines

Part 2 of "A Piece of the Road Suite"

composed & arranged
by John LaBarbera

1ST B^b TENOR SAX

ROCK

2ND TIME ONLY


4 3

A A⁹ A¹⁷ 3 TIMES

1. 2. 3.

B

C

SOLO 
F7(sus)

(4) (8)

E

A7(SUS)

(4)

Musical staff for E chord, first measure with notes and slurs.

A7(SUS)

(8)

Musical staff for E chord, second measure with slurs.

F

F7(SUS)

(4)

Musical staff for F chord, first measure with slurs.

F7(SUS)

(8)

Musical staff for F chord, second measure with slurs.

G

F7(SUS)

END OF SOLO

Musical staff for G chord, first measure with slurs.

H

BEGIN GRADUAL FADE TO END

f-mp

Musical staff for H section, first measure with notes and slurs.

mf-p

Musical staff for H section, second measure with notes and slurs.

1.

2.

mp

p

Musical staff for H section, third measure with first and second endings.

STAGGER BREATHS

RIT.

E \flat

pp

pp

Musical staff for H section, fourth measure with slurs and dynamics.

Countin' Them Long White Lines

Part 2 of "A Piece of the Road Suite"

2ND B^b TENOR SAX
Rock

composed & arranged
by John LaBarbera

2ND TIME ONLY

4 3

A A^a A^a 3 TIMES

mf

1. 2. 3.

B

f

C

D (F³sus) 8 E (A⁷sus) 8 F (F⁷sus) 4

G (4)

H BEGIN GRADUAL FADE TO END

f-mf

mf-p

1. 2.

STAGGER BREATHS

RIT.

p pp ppp

197

NOTICE: The law provides penalties for any unauthorized copying or reproduction of any copyrighted musical work.

Countin' Them Long White Lines

Part 2 of "A Piece of the Road Suite"

composed & arranged by John LaBarbera

B BARITONE SAX

Rock

2ND TIME ONLY

Countin' Them Long White Lines

Part 2 of "A Piece of the Road Suite"

1ST B^b TRUMPET
ROCK

composed & arranged
by John LaBarbera

4 4

A A9 A17 3 TIMES
2ND TRPT. (3RD TIME ONLY)

mf

1. 2. 3. PLAY

B

C

D (F7sus) (TENOR Solo) 8

E (A7sus) 2ND TRPT.

f opt. gua lower

OPT. PLAY gua

(PLAY)

F (F7sus) 7

G 2nd x only

mf

f opt. gua lower

H 6 1. 2 1. 2.

2 2

Rit.

Countin' Them Long White Lines

Part 2 of "A Piece of the Road Suite"

2ND B^B TRUMPET
ROCK

composed & arranged
by John LaBarbera

Countin' Them Long White Lines

Part 2 of "A Piece of the Road Suite"

3RD Bb TRUMPET

ROCK

composed & arranged by John LaBarbera

4 4

A A⁹ A¹⁷ 3 TIMES, PLAY 3RD TIME ONLY

mf

1. 2. 3.

B

f

C

D (F⁷sus) (TENOR Solo)

E (A⁷sus)

mf

F (F⁷sus) 2ND TIME ONLY

G

H

1. 2. 2. 2. 2.

RIT.

Countin' Them Long White Lines

Part 2 of "A Piece of the Road Suite"

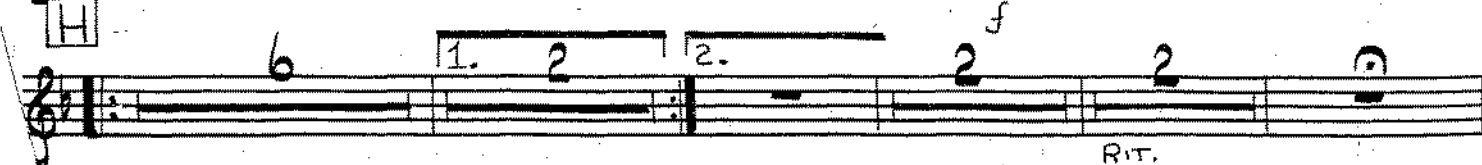
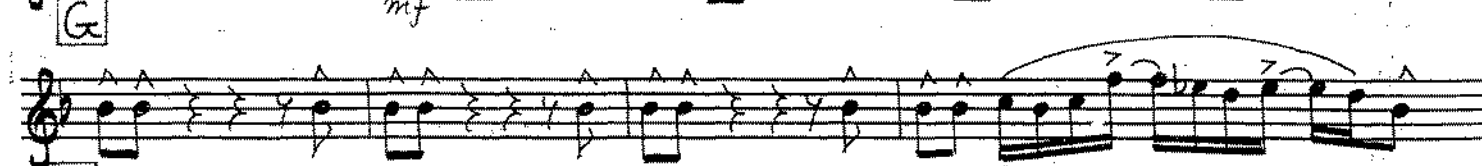
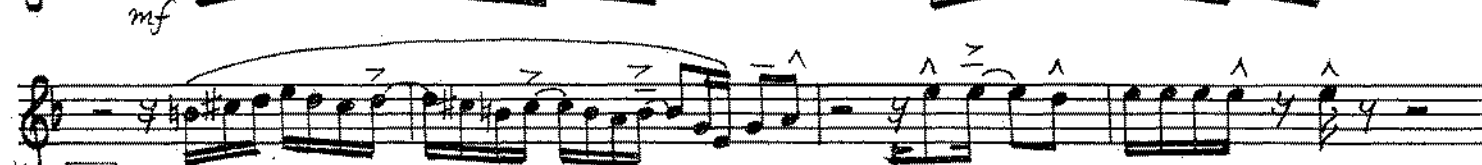
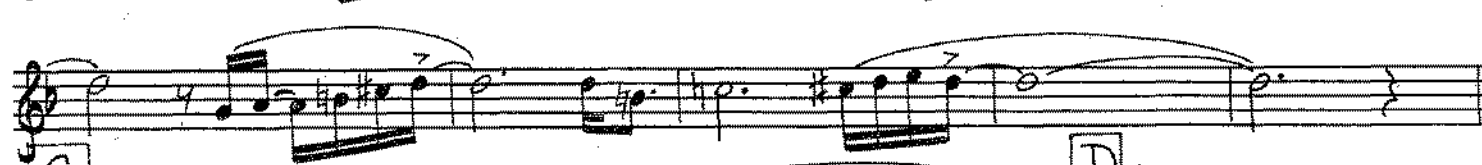
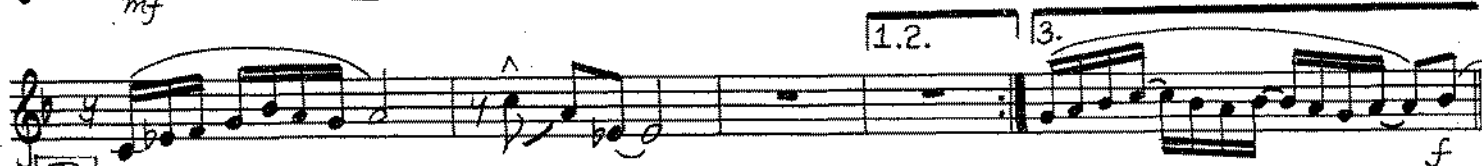
4TH B^b TRUMPET

composed & arranged
by John LaBarbera

ROCK



A A⁹ A¹⁷ 3 TIMES, PLAY 3RD TIME ONLY



Rit.

Countin' Them Long White Lines

Part 2 of "A Piece of the Road Suite"

1ST TROMBONE
ROCK

composed & arranged
by John LaBarbera

4 4

A A⁹ A¹⁷ 3 TIMES, PLAY 2ND + 3RD TIMES ONLY

mp

1. 2. 3. 4. **B**

C

D (E^b7^{sus}) (TENOR SOLO) 8 **E** (G⁷sus)

mf

F 2ND TIME ONLY (E^b7^{sus})

mf

G

H "BEGIN GRADUAL FADE TO END"

1. 2.

f-mp mf-p **C**

p decresc. Rit. *pp*

Countin' Them Long White Lines

Part 2 of "A Piece of the Road Suite"

2ND TROMBONE

composed & arranged
by John LaBarbera

ROCK

4 4

A A⁹ A¹⁷ 3 TIMES, PLAY 2ND + 3RD TIMES ONLY

mp

B

f

C

D (E^b7sus) (TENOR SOLO) 8

E (G7sus) mf

F 2ND TIME ONLY

mf

G

H BEGIN GRADUAL FADE TO END

f-mp mf-p

p decresc. Rit. pp

187

Countin' Them Long White Lines

Part 2 of "A Piece of the Road Suite"

3RD TROMBONE

ROCK

composed & arranged
by John LaBarbera

4 4

A **A⁹** **A¹⁷** 3 TIMES, PLAY 2ND + 3RD TIMES ONLY

C

D (E^b7sus) (TENOR SOLO) 8 **E** (G7sus)

F 2ND TIME ONLY (E^b7sus)

G

H BEGIN GRADUAL FADE TO END (PLAY)

Countin' Them Long White Lines

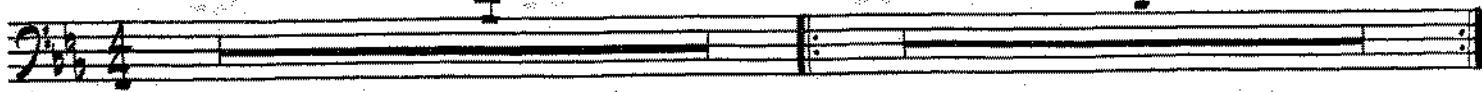
Part 2 of "A Piece of the Road Suite"

4TH TROMBONE
ROCK

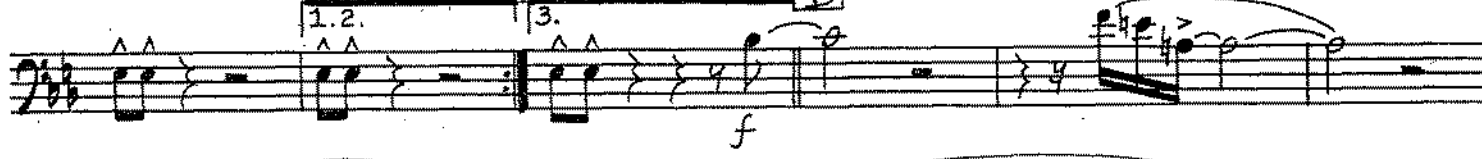
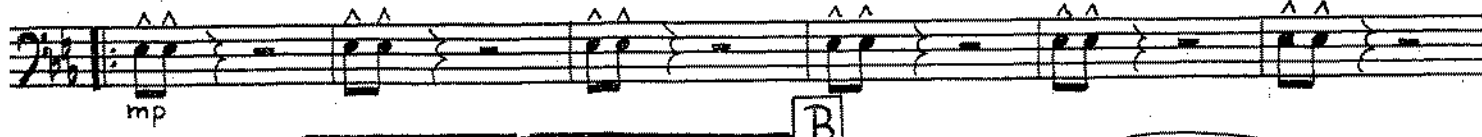
composed & arranged
by John LaBarbera

4

4



A **A⁹** **A¹⁷** 3 TIMES, PLAY 2ND + 3RD TIMES ONLY

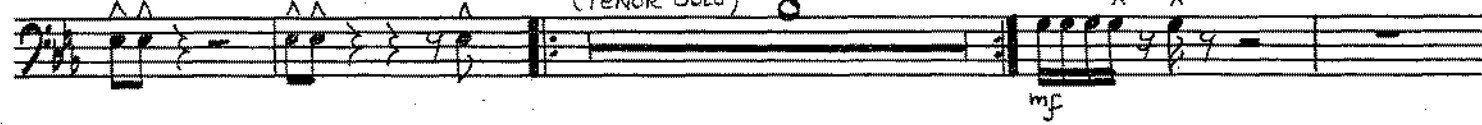


C

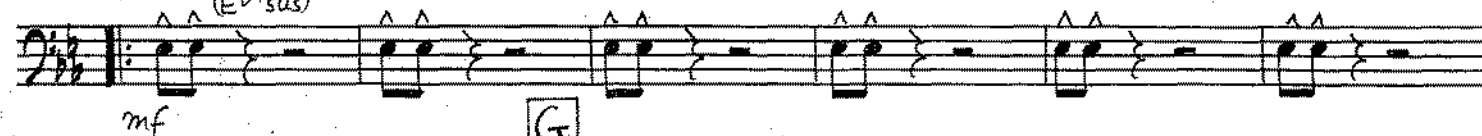


D (E^b7^{sus})
(TENOR SOLO) 8

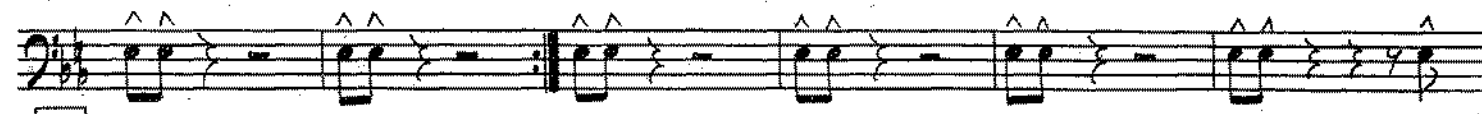
E G⁷^{sus}



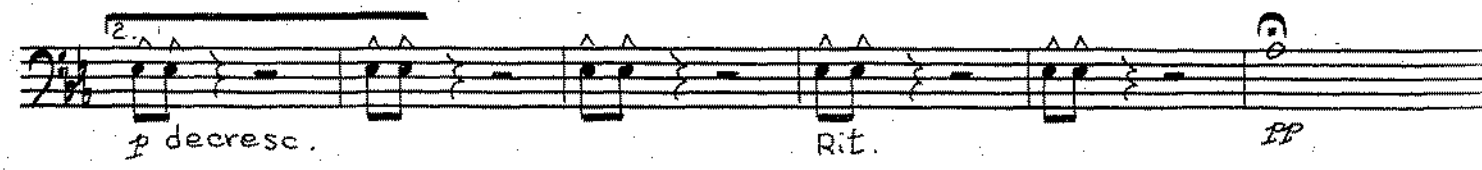
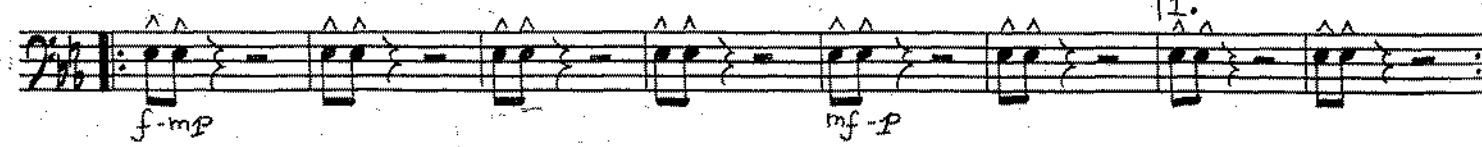
F 2ND TIME ONLY
(E^b7^{sus})



G



H BEGIN GRADUAL FADE TO END



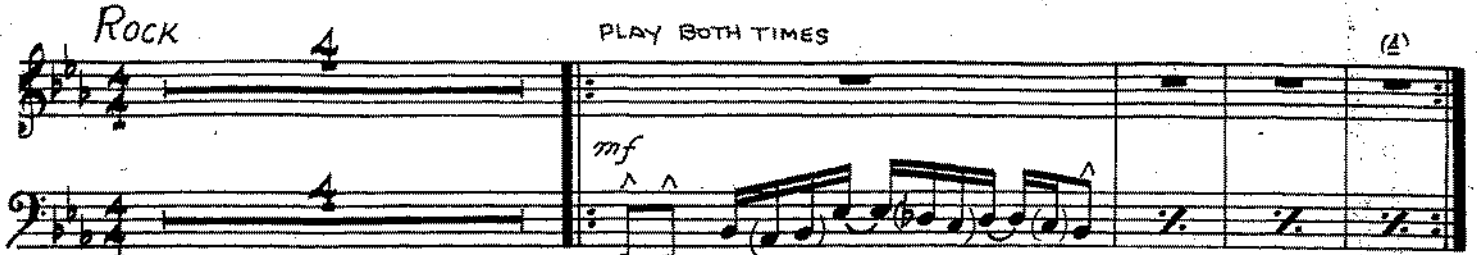
Countin' Them Long White Lines

Part 2 of "A Piece of the Road Suite"

PIANO

composed & arranged
by John LaBarbera

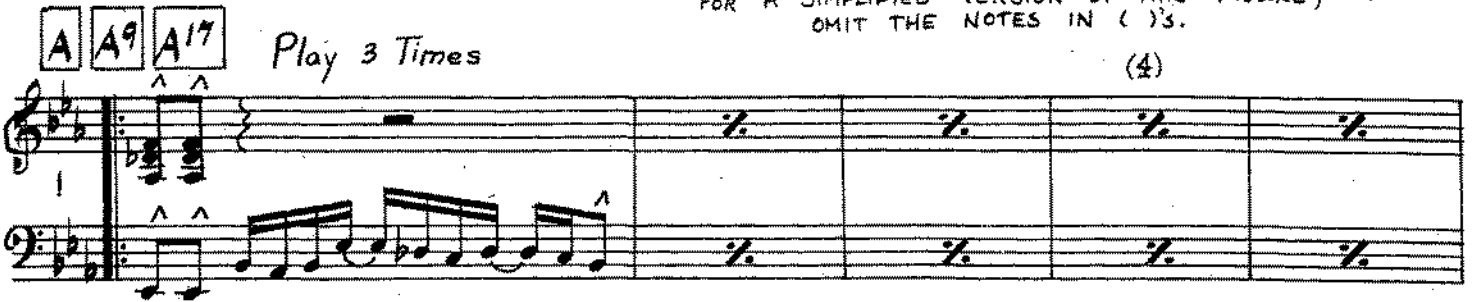
Rock 4 **PLAY BOTH TIMES** (A)



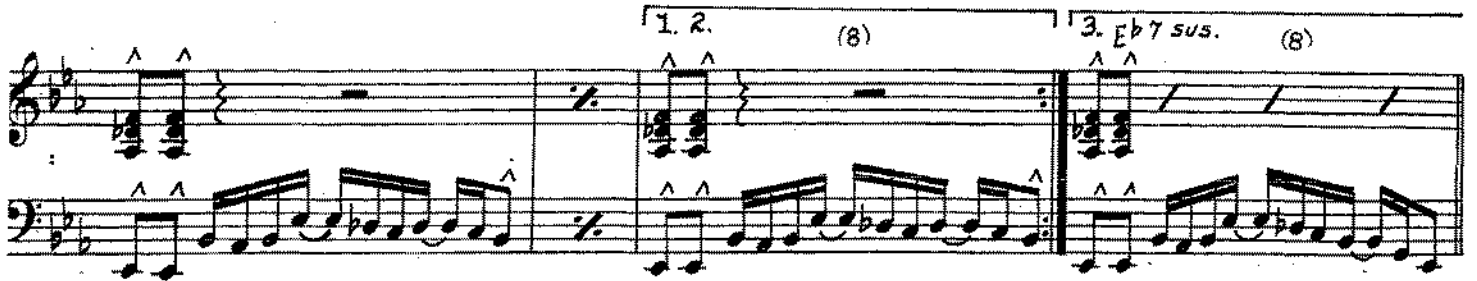
mf

A **A⁹** **A¹⁷** *Play 3 Times* (4)

FOR A SIMPLIFIED VERSION OF THIS FIGURE, OMIT THE NOTES IN ().



1. 2. (8) 3. **E^b7 sus.** (8)



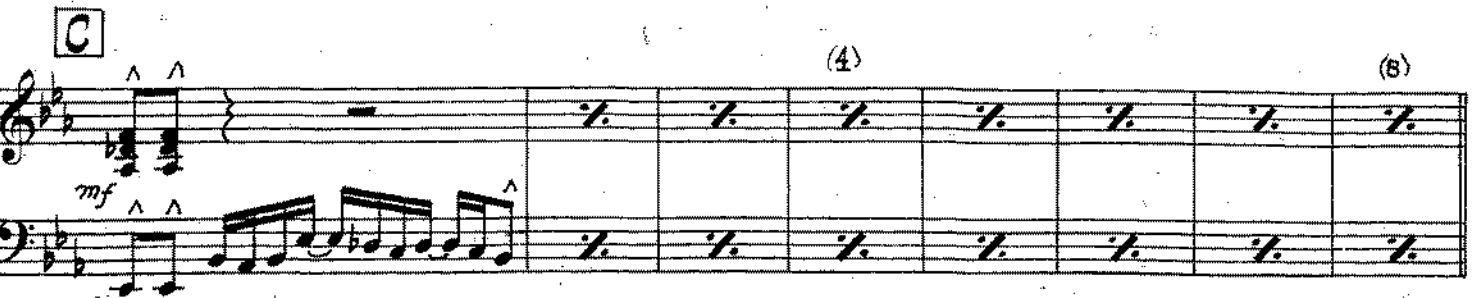
B **G⁹ sus.** (4)



G⁷ sus. (#9) **G⁹ sus. CM⁹/G** **G⁷ sus. (b9 #11)**



C (4) (8)



(TENOR SOLO)

D *E^b7 sus.* (4) (8)

E *G7 sus.* (4) (8)

F *E^b7 sus.* (4) (8)

G *E^b7 sus.* (4) **H** (ENS.) (GRADUAL FADE TO END) (4)

1. (8) 2. (8) *mp* *p* *decresc.*

(8) *Grad. Fade* *p rit.* **FMI9**

QUITAR

COUNTIN' THEM LONG WHITE LINES



Rock

♩ 3 TIMES ♩

A A9 A17

GUITAR

COUNTIN' THEM LONG WHITE LINES



Rock

BEGIN GRADUAL FADE TO END

Handwritten musical score for guitar. The score consists of 10 staves. The first three staves contain musical notation with various annotations. The first staff starts with a box containing 'H'. The first staff has notes with accents (^) and fingerings (1, 2, 3, 4, 5, 6). The second staff has dynamics 'f-mp' and 'mf-p'. The third staff has dynamics 'p' and 'dececu'. Below the first three staves, there are markings: 'GRADUAL FADE' with a dashed line, 'RIT', and 'PP'. The remaining seven staves are empty.

Countin' Them Long White Lines

Part 2 of "A Piece of the Road Suite"

composed & arranged by John LaBarbera

BASS

Rock 4

BOTH TIMES

(4)

Play 3 Times

A A^9 A^{17} E^b7sus

(4)

mf FOR A SIMPLIFIED VERSION OF THIS FIGURE, OMIT NOTES IN ()'s.

mf 1. 2. (8) 3.

(8)

B G^9sus

(4)

(8)

C *f*

(4)

(8)

D *mf* E^b7sus . (TENOR SOLO) COMP-AD LIB

(4)

(8)

E *mf* G^7sus

(4)

(8)

F E^b7sus .

(4)

(8)

G *mf* E^b7sus .

(4)

H *mf* (GRADUAL FADE TO END)

(4)

f-mp (8) 2. *mf-p* Grad. fade

(8)

p *decresc.* *p rit.* *pp*

Countin' Them Long White Lines

Part 2 of "A Piece of the Road Suite"

composed & arranged
by John LaBarbera

DRUMS

Rock
(Conga)

CYM 2ND Time Only

(4)

A A9 A17 Play 3 Times

mf

simile

(4)

simile
mf

1. 2.

(8)

3.

(8)

B

(4)

Fill

C

f

(4)

(8)

mf

D

(TENOR SOLO)

(4)

(8)

mf

E

(4)

(+ tpts., +bns.)

(8) Fill

F

(4)

(8)

G

mf

(4)

H BEGIN GRADUAL FADE TO END

(4)

mf

f - mp

mf - p

p decresc.

rit.

pp

Countin' Them Long White Lines

Part 2 of "A Piece of the Road Suite"

composed & arr.
by John LaPa

FULL SCORE

CONDUCTOR'S SCORE

ROCK $\text{♩} = 160$

(VAMP IF DESIRED)

2ND TIME ON

Musical score for the first system, including parts for Saxes (1st Alto, 2nd Alto, 1st Tenor, 2nd Tenor, Baritone), Trpts (1st, 2nd, 3rd/4th), Trbns (1st, 2nd, 3rd/4th), Bass, Drums, Guitar, and Piano. The score includes various musical notations, dynamics, and performance instructions.

BOTH TIMES

CONGA DRUM (OR DRUM SET) - SOLO AD LIB

CONTINUE CONGA ON 2ND TIME ONLY

GUITAR - COL BARS 800

BOTH TIMES

FOR A SIMPLIFIED VERSION OF THIS FIGURE IN THE PIANO, GUITAR, AND BASS PARTS, OMIT THE NOTES IN ().

A A⁹ A¹⁷ 3 TIMES (1st X - SAXES
2nd X - ADD TRBNS.
3RD X - ADD TRPTS.)

1. 2.

Musical score for the second system, continuing the parts for Saxes (1st Alto, 2nd Alto, 1st Tenor, 2nd Tenor, Baritone), Trpts (1st, 2nd, 3rd/4th), Trbns (1st, 2nd, 3rd/4th), Bass, Drums, Guitar, and Piano. The score includes various musical notations, dynamics, and performance instructions.

PLAY 3 TIMES

PLAY 3 TIMES

PLAY 3 TIMES

PLAY 3 TIMES

PLAY 3 TIMES

PLAY 3 TIMES

PLAY 3 TIMES

PLAY 3 TIMES

PLAY 3 TIMES

PLAY 3 TIMES

PLAY 3 TIMES

PLAY 3 TIMES

PLAY 3 TIMES

PLAY 3 TIMES

PLAY 3 TIMES

PLAY 3 TIMES

PLAY 3 TIMES

PLAY 3 TIMES

PLAY 3 TIMES

PLAY 3 TIMES

PLAY 3 TIMES

B

1st Alto
2nd Alto
1st Tenor
2nd Tenor
Baritone

1st
2nd
3rd
4th

1st
2nd
3rd
4th

Bass

Drums

Guitar
E7(9) Sus
Guitar - COL SAXES
G9 Sus

Piano

G7(9)(#9)
G9 Sus



C

1st Alto
2nd Alto
1st Tenor
2nd Tenor
Baritone

1st
2nd
3rd
4th

1st
2nd
3rd
4th

Bass

Drums
Fill

Guitar
Guitar - COL SAXES
C#7
G9 Sus (#9)

Piano
Guitar - COL PIANO R.H. (Loops)
Guitar - COL Bass 9sus

Saxes

1st Alto
2nd Alto
1st Tenor
2nd Tenor
Baritone

Trpts

1st
2nd
3rd
4th

Trbs

1st
2nd
3rd
4th

Bass

Drums

Guitar - COL BASS 3rd

Piano

opt 2nd line



D TENOR SAX SOLO (CHANGES ALSO CUED IN OTHER PARTS)

Saxes

1st Alto
2nd Alto
1st Tenor
2nd Tenor
Baritone

Trpts

1st
2nd
3rd
4th

Trbs

1st
2nd
3rd
4th

Bass

Drums

Guitar - COL BASS 3rd

Piano

SOLO
PZ 508

D

E

1st Alto
2nd Alto
1st Tenor
2nd Tenor
Baritone

Saxes

1st
2nd
3rd
4th

Trpts

1st
2nd
3rd
4th

Trbns

Bass

Drums

Guitar
Piano

Musical score for section E. The score is arranged in a standard orchestral layout. The top section consists of five saxophone staves (1st Alto, 2nd Alto, 1st Tenor, 2nd Tenor, Baritone). Below these are four trumpet staves (1st, 2nd, 3rd, 4th) and four trombone staves (1st, 2nd, 3rd, 4th). The bottom section includes a Bass staff, a Drums staff, and a combined Guitar/Piano staff. The saxophone parts are mostly rests with some notes in the 1st Tenor part. The trumpet and trombone parts feature complex rhythmic patterns with many slurs and accents. The bass line is a steady eighth-note pattern. The drums play a consistent pattern. The guitar and piano parts are also rhythmic, with many slurs and accents. There are some performance instructions like 'OPT. PLAY END' and 'GUITAR - COL. PIANO 8th'.

F

1st Alto
2nd Alto
1st Tenor
2nd Tenor
Baritone

Saxes

1st
2nd
3rd
4th

Trpts

1st
2nd
3rd
4th

Trbns

Bass

Drums

Guitar
Piano

Musical score for section F. The score is arranged in a standard orchestral layout. The top section consists of five saxophone staves (1st Alto, 2nd Alto, 1st Tenor, 2nd Tenor, Baritone). Below these are four trumpet staves (1st, 2nd, 3rd, 4th) and four trombone staves (1st, 2nd, 3rd, 4th). The bottom section includes a Bass staff, a Drums staff, and a combined Guitar/Piano staff. The saxophone parts have some notes in the 1st Tenor and Baritone parts. The trumpet and trombone parts feature complex rhythmic patterns with many slurs and accents. The bass line is a steady eighth-note pattern. The drums play a consistent pattern. The guitar and piano parts are also rhythmic, with many slurs and accents. There are some performance instructions like '2ND TIME ONLY' and 'GUITAR - COL. PIANO 8th'.

G

1st Alto
2nd Alto
1st Tenor
2nd Tenor
Baritone

Saxes

1st
2nd
3rd
4th

Trpts

1st
2nd
3rd
4th

Trbs

Bass
Drums
Guitar
Piano

FR SUS
FR SUS
FR SUS
FR SUS
FR SUS

2ND TIME ONLY

END OF SOLID

3RD TIME ONLY

G

GUITAR - COL BASS B⁷
FR SUS



H BEGIN GRADUAL FADE TO END

1st Alto
2nd Alto
1st Tenor
2nd Tenor
Baritone

Saxes

1st
2nd
3rd
4th

Trpts

1st
2nd
3rd
4th

Trbs

Bass
Drums
Guitar
Piano

f-mp
f-mp
f-mp
f-mp
f-mp

f-mp

f-mp

f-mp

GUITAR - COL BASS B⁷

H BEGIN GRADUAL FADE TO END

